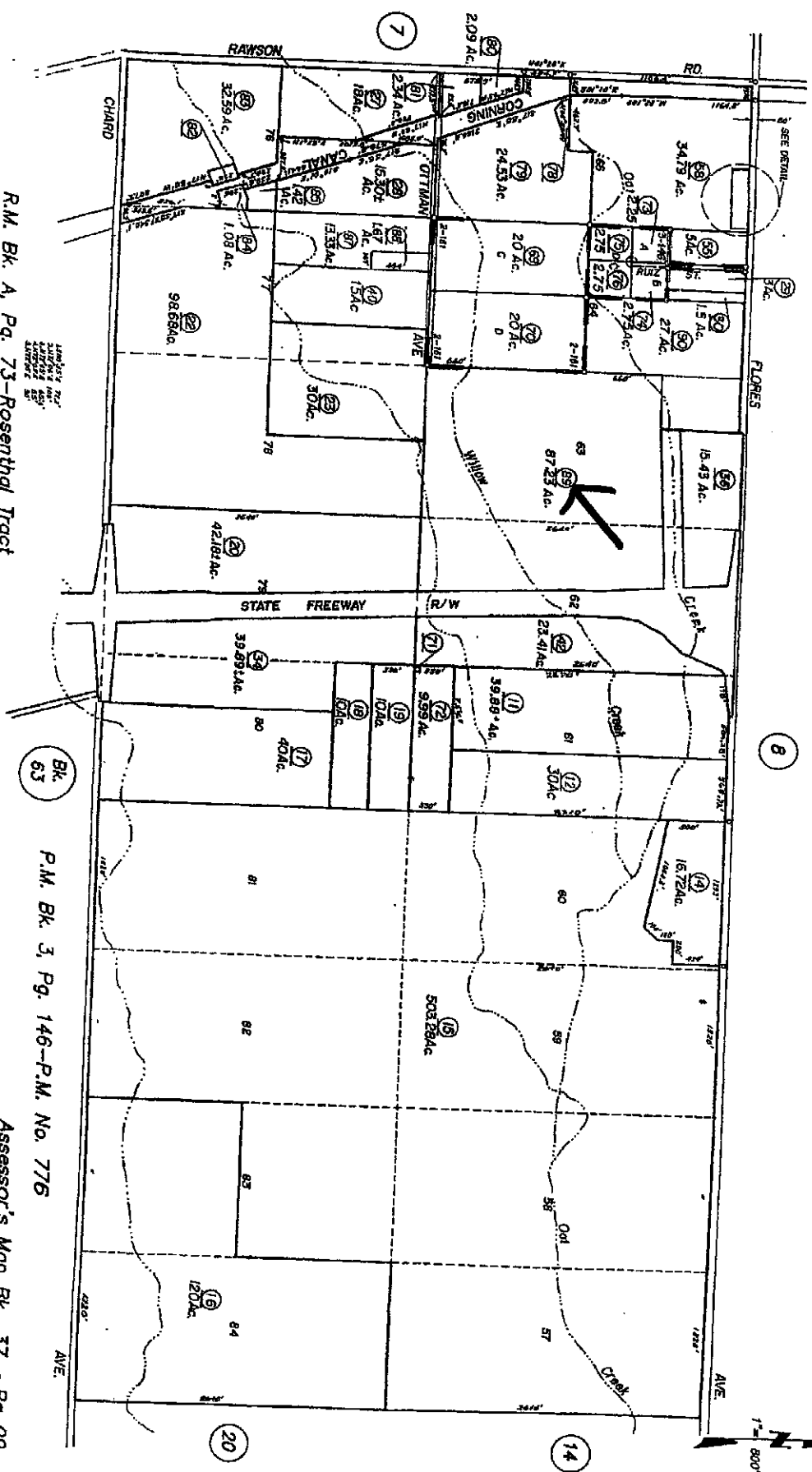


RANCHO DE LAS FLORES

37-09



R.M. Bk. A, Pg. 73-Rosenthal Tract
 R.M. Bk. D, Pg. 21-Ptn. C.C. Probert Property
 P.M. Bk. 2, Pg. 161-P.M. No. 632

NOTE-Assessor's Block Numbers Shown in Ellipses
 Assessor's Parcel Numbers Shown in Circles

Assessor's Map Bk. 37 -Pg. 09
 County of Tehama, Calif.

Bk. 63

P.M. Bk. 3, Pg. 146-P.M. No. 776

20

14

1" = 800'