

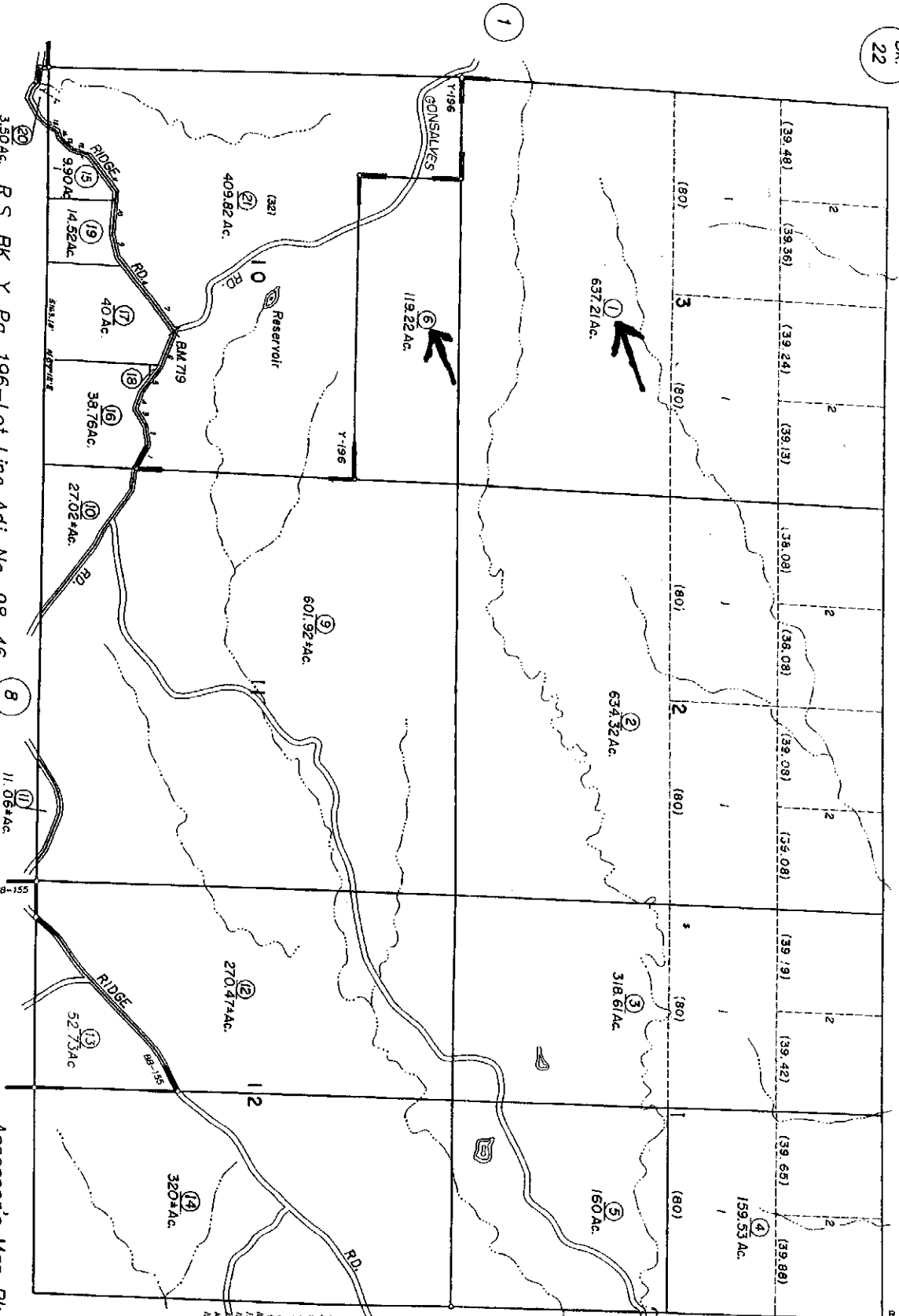
Bk. 22

T.26N., R.5W., M.D.B.&M.

25-02

317  
517  
617  
717  
817  
917  
1,256

1" = 1200'



1. N. 68° 50' 10" W.	356.4
2. S. 17° 30' 10" W.	236.44
3. S. 12° 30' 10" W.	242.5
4. N. 72° 30' 10" W.	208.2
5. N. 77° 30' 10" W.	492.74
6. S. 14° 30' 10" W.	594.4
7. S. 10° 30' 10" W.	594.4
8. S. 10° 30' 10" W.	594.4
9. N. 72° 30' 10" W.	332.0
10. N. 67° 30' 10" W.	561.86
11. S. 17° 30' 10" W.	561.86
12. S. 17° 30' 10" W.	292.25
13. S. 17° 30' 10" W.	182.48
14. S. 17° 30' 10" W.	182.48
15. S. 17° 30' 10" W.	51.45

R.S. BK. Y, Pg. 196-Lot Line Adj. No. 98-46  
R.S. BK. BB, Pg. 155

Assessor's Map Bk. 25 -Pg. 02  
County of Tehama, Calif.

JAN 0 6 2005